



Lord Deramore's
Primary School



School Lane, Heslington, York, YO10 5EE

Tel: 01904 553890

My email : hsmith@lordderamores.com

General email : office.ld@york.gov.uk

Website: <http://lordderamores.com>

Facebook: <https://www.facebook.com/lordderamoresprimaryschool>

Charity number : 1047005

Welcome to Lord Deramore's School, Heslington, York.

Phase 1 – 'Seeds of Hope' – Planting Brighter Futures.



https://www.youtube.com/watch?v=LmV25k_zMa0 BBC feature about hedgehogs.

<https://www.facebook.com/share/v/16AvwJPWoV/?mibextid=WC7FNe> Renewing the dead hedge.

<https://www.facebook.com/share/v/1Ce9qsSVVb/?mibextid=UalRPS> Our Remembrance and Reflection Garden.

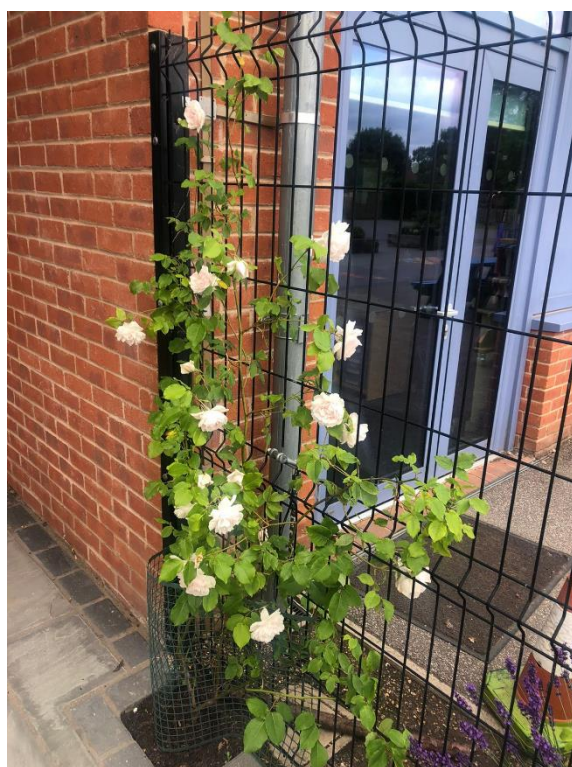
The Main Entrance Area. Before.



Our Welcome Plaza With Bee-Friendly Flowers. After.



Cuttings From the Original School Rose Planted in 1997. A White Rose is on the School's Uniform.



School Lane Main Entrance – Our Reflection Garden. See Video Link Above.

Before



After



School Lane Main Entrance Reflection Garden Continued.

Before



After



Derahenge.



The Car Park Planters.

A Donation.



Mess!



Tidy!



Our Bee Hive.



Four of the Seven Planters.



We Had to Make Removable Rabbit-Proof Cages!



Our Tool Shed 10 x 13.



Tools Reclaimed From the Local Tip.



Our Leaf Composters.



Our Snowdrop Rockery.



Our English Bluebell Family Planting Day. (1000 Bulbs in the Green Were Ordered and Planted.)



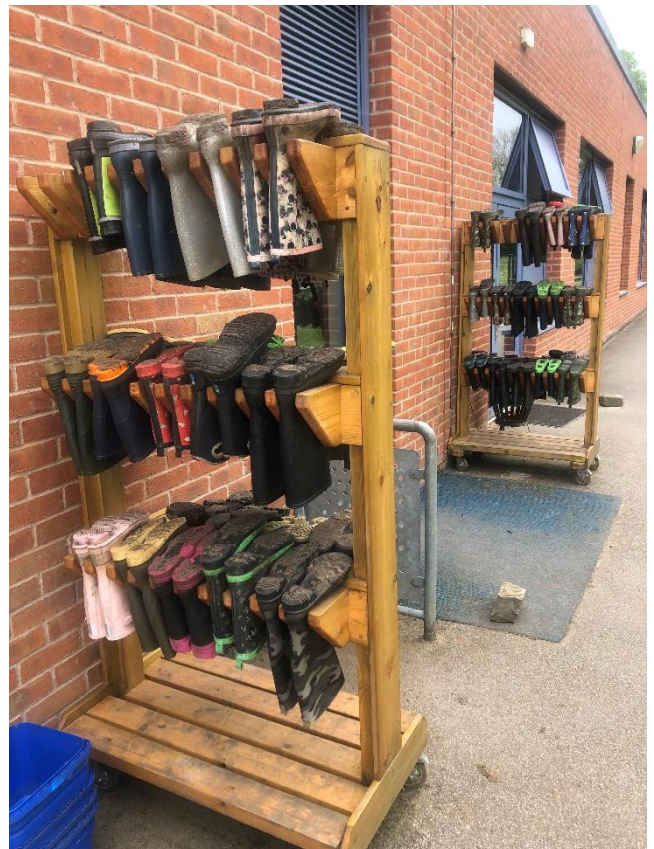
Our First Dead Hedge and Hedgehog Sanctuary.



Replacing the Rotten Dead Hedge Posts.



Welly Racks For Each Class for Outdoor
Learning and Play Times.
Early Years to Year 6.



Our Bug Hotels. Attempt 1. Budget Accommodation!



Our second one. 5 star!



Our Bird Boxes.



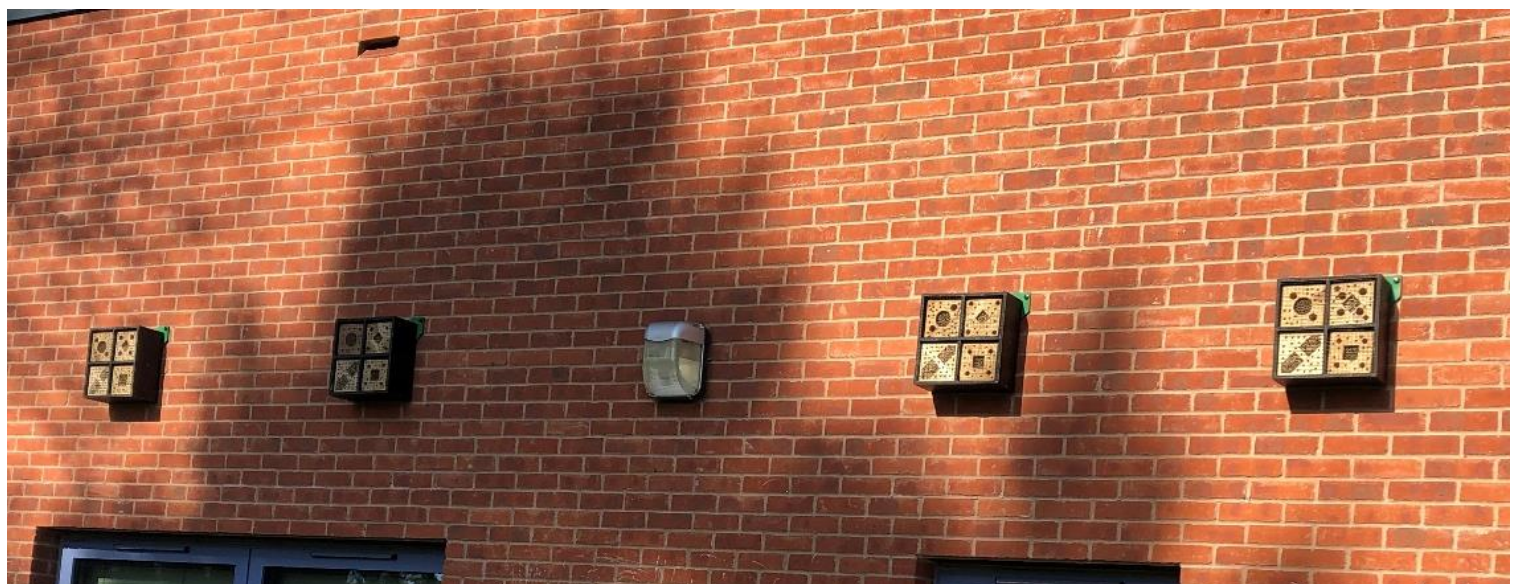
Our Magnificent Greenhouse 20 x 12.



Our Gigantic Boulders.



Our Bee Hotels.



Our Willow Arch.



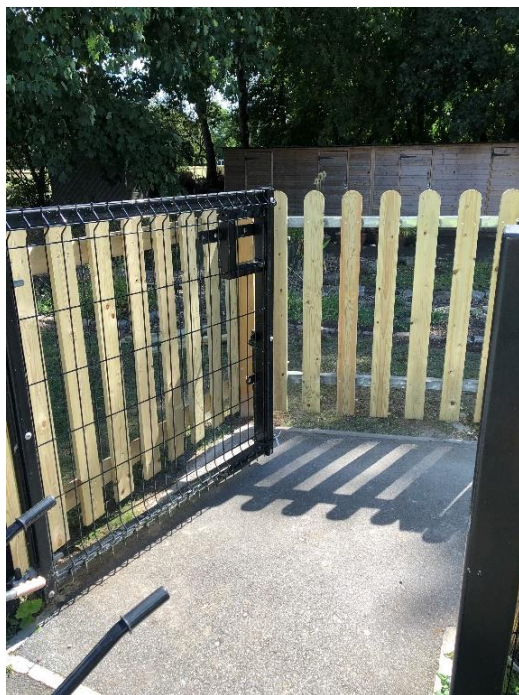
Four Picnic Benches for Use on the Field at Playtimes and Lunchtimes.



Our Forest School Area – Before and During Renovations.



Our Forest School Area – After.



The Sensory Garden.



Before
After



During



A Random Corner of the Forest School Area.

Before.



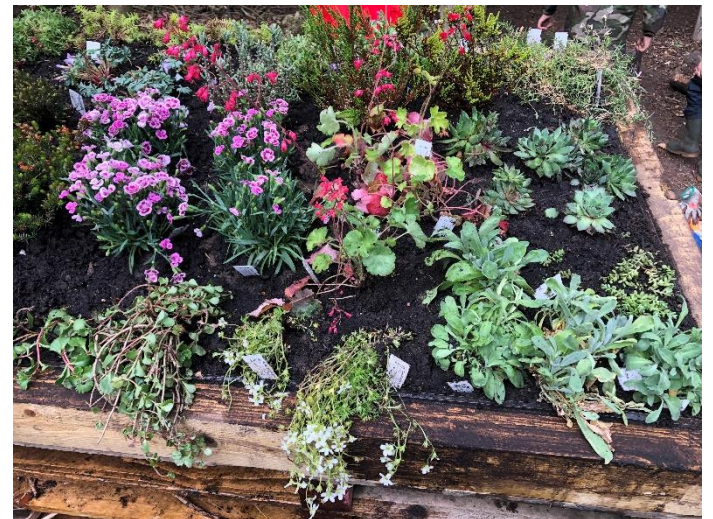
After.



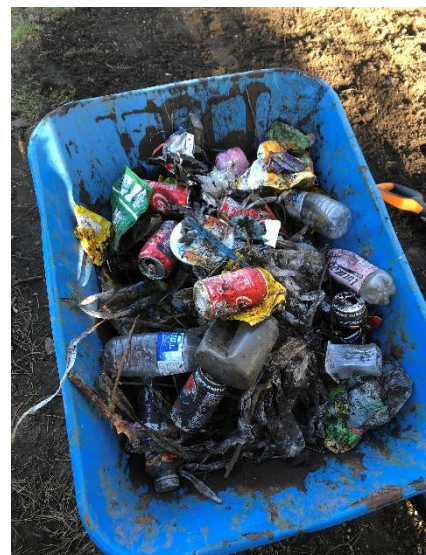
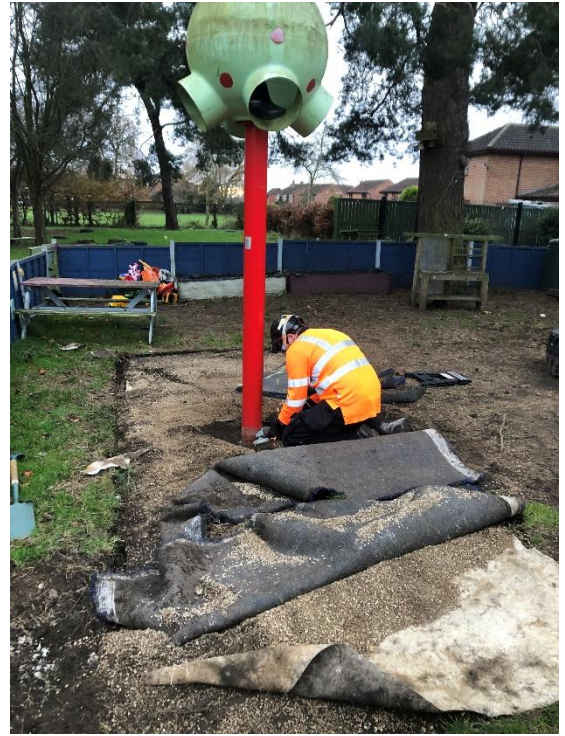
The Forest School Dens.



Bug Hotel with Living Roof.



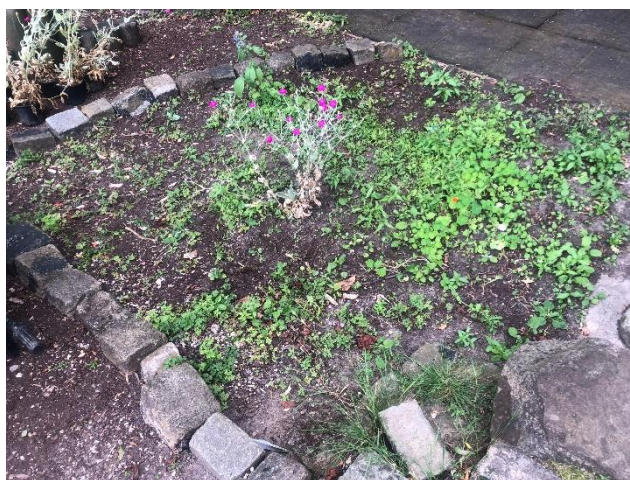
Kid's Kabin Wrap Around Care. Before.



Kid's Kabin Wrap Around Care. During and After.



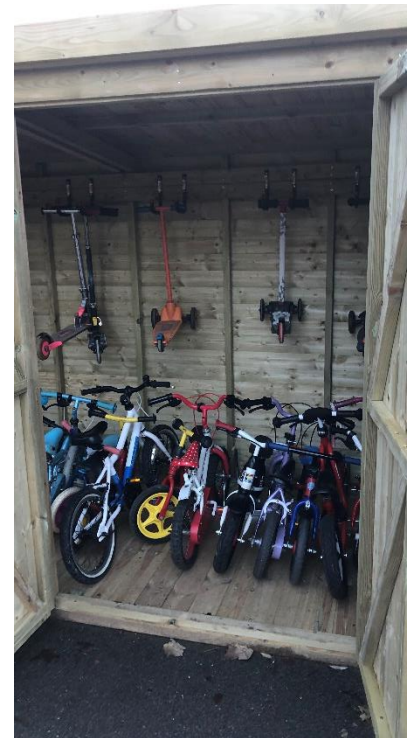
Sensory Garden Beds.



Improving
a Path
Edge.



Phase 1's Bike and Scooter Shed.



Seating in a Corner of the Playground.



Three Empty Planters.



The Lavender Bed.
Before.



After.



Y2 Pupils Requested Some Picnic Benches for Outside Their Classroom.



The Short Bungee Ropes Used to Pop Off Into the Bin and Were Thrown Away. Not Any More!

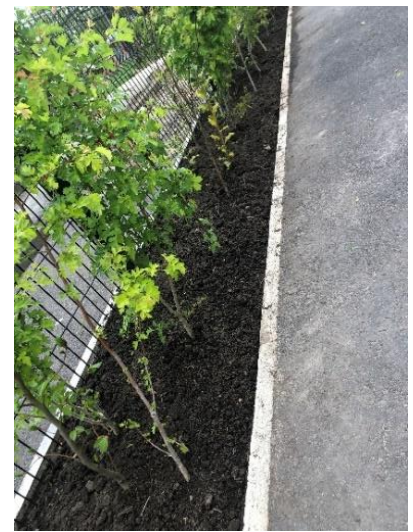


The Staff Car Park.

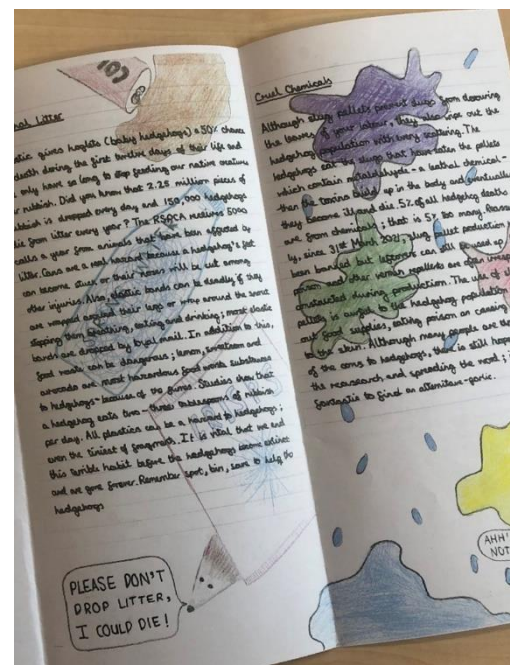
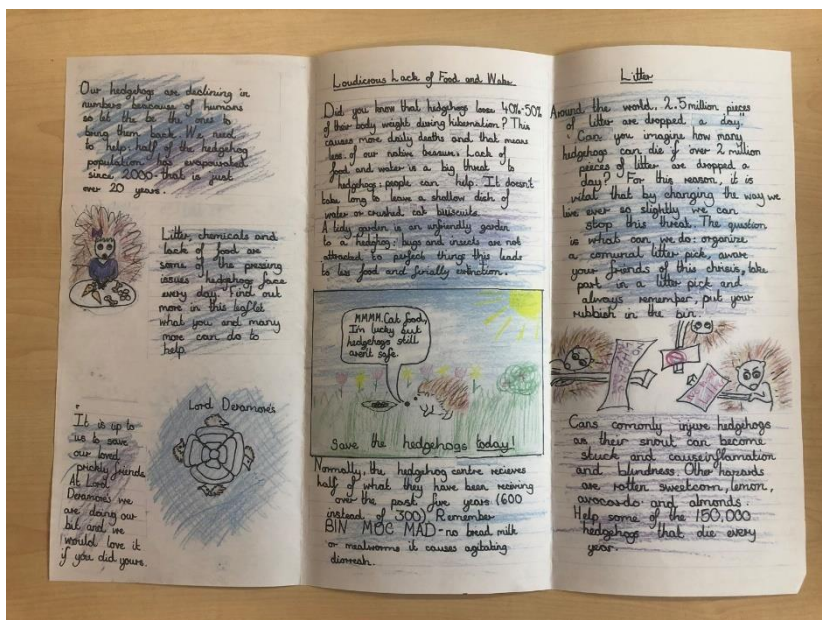
Before.



After.



Raising Awareness of how to Help Hedgehog - Leaflets into the Community.



Litter Picks in the Local Area.



Helping / Raising Awareness of Hedgehogs.



Our Hedgehog-Friendly School Award – Gold Level.



Hedgehog Releases / Rescues.

